



PC*MILER & CAT SCALES

TECHNOLOGY THAT DRIVES TRANSPORTATION™

Helpful Information on Searching for and Importing Newer CAT Scale Locations into PC*MILER

PC*MILER includes the ability to locate and route to CAT Scale locations throughout the U.S. and Canada. In PC*MILER, CAT Scale locations are categorized as points of interest (POIs) and have been added to the PC*MILER RouteMap™ with an identifying icon. Users of PC*MILER have the ability to add these locations as stops on a route and import in newer CAT Scale locations that may not be in the database using the import custom place feature.

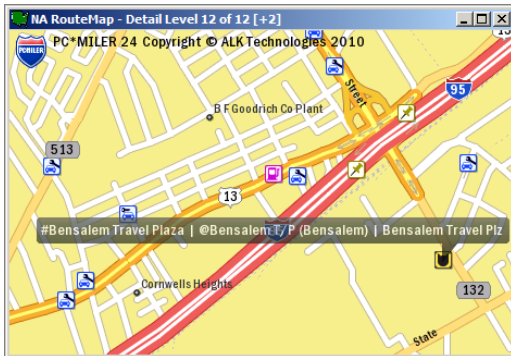
This document provides information on:

- Searching the PC*MILER RouteMap for CAT Scale Locations 1**
- Using the Location Radius Tool to Search for CAT Scale Locations 2**
- Importing Newer CAT Scale Locations into the Database..... 3**

Searching the PC*MILER RouteMap for CAT Scale Locations

CAT Scale locations are identified on the PC*MILER RouteMap with the following icon: .

As an example, the image below shows a CAT Scale location in Bensalem, PA, just off I-95. Note how the black callout box just above the icon displays the full name of the location. A callout can be activated by placing the mouse pointer over any icon on the map.



For more information about the location, double-click the icon to open a window that contains the address of the location, as shown below. In this example, there are other POIs located at this particular location and the location highlighted in the image below is the CAT Scale's information.

Name	City	Address	Zip
#Bensalem Travel Plaza	BENSALEM	95 Exit 37	
@Bensalem T/P (Bensalem)	BENSALEM	95 X37	
Bensalem Travel Plz	Bensalem	2950 State Rd	19020

There are three ways to add a CAT Scale as a stop directly to the route:

- Users can directly type the location into the Route Entry window as a stop. The PC*MILER database uniquely identifies CAT Scales directly in the Route Entry window's stop pick list by typing its location in the Stop field preceded by a pound sign (#). An example is #Petro Shopping Center, NJ. To bring up a pick list of all CAT Scales in a particular state, enter a pound sign followed by a comma and the state abbreviation, for example #, nj.
- When you've identified a CAT Scale icon on the RouteMap, click Pick Stops from the Map > Pick/Label menu. Make sure a Route Entry window is open then place your mouse pointer over the CAT Scale icon on the screen. Click the icon with the mouse and the location will be added as a stop to the active Route Entry window.
- Users can also locate CAT Scales through the Location Radius tool, described below.

Using the Location Radius Tool to Search for CAT Scale Locations

The Location Radius tool allows users to search for groups of locations in the database within a specified mileage radius around any location. Follow the instructions below to find CAT Scale locations within 15 miles of Levittown, PA.

1. Open the route entry window and enter **Levittown, PA**. Click **Enter** to validate the stop.
2. Highlight the stop and click on the **Location Radius** tab. You'll see that your stop has automatically been entered as the city for this search.
3. Enter "**15**" as the number of miles for a radius.
4. Under "Place Types", uncheck **Cities** and check the box next to **POIs**. In the Category pick list that opens to the right, click the drop-down arrow and select **Cat Scales**. Click **Find**.

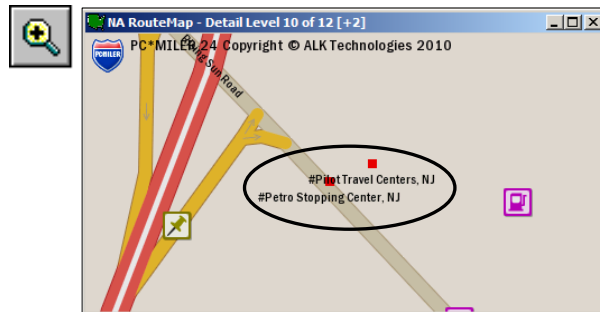
5. A window will open that lists the CAT Scale locations found.

Cat Scales	Miles
#Petro Stopping Center, NJ	6.8
#Pilot Travel Centers, NJ	6.9
#Bensalem Travel Plaza, PA	7.2

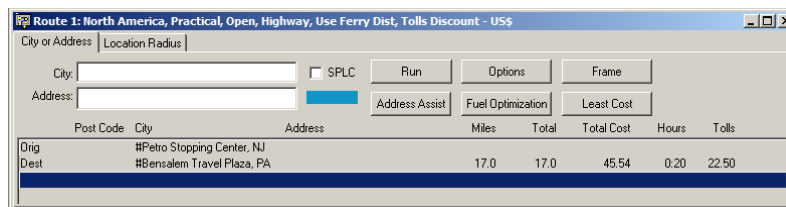
Highlight the point(s) you wish to add, plot, or save.

6. With your mouse, click any or all location(s) in the list to highlight it. You now have two options:

- **Click the Plot Points button to tag and view that location on the map.** If you choose Plot Points, if the RouteMap is minimized select *Restore* from the pop-up menu to open the map. You'll see the highlighted location(s) you plotted is represented on the map by a small red square.



- **Click Add Stop(s) to add the stop directly to the open route entry window.** If you choose Add Stop(s), the selected location will be added as a stop in the active route window. The stops selected replace Levittown, PA, which was initially highlighted as the stop.



Importing Newer CAT Scale Locations into the Database

If you are looking to find a particular CAT Scale location that is not currently in the PC*MILER database, use the Import Custom Place Manager to create a Custom Place of the newer location. Follow these instructions to do so, or in the PC*MILER *User's Guide* go to the section labeled as "Importing Custom Places" for assistance.

1. Go to <http://catscale.com>. Click on Find A CAT Scale, then click on PC*MILER download and **download the new CAT Scale location file.** (NOTE: Please make sure that the file you are downloading includes latitude/longitude coordinates for every location.)
2. The file is formatted to be imported into the PC*MILER database. To insure you do not have duplicate locations appear on your device, download the correct file needed for your device. The files are formatted for which year the GPS device was produced. Download which file you need depending on your model.
 - For PC*MILER 24 newer than 1/01/2010
 - For PC*MILER 23 newer than 1/01/2009
 - For PC*MILER 22 newer than 1/01/2008
3. We recommend downloading the file to your Desktop so you can easily find it to import into PC*Miler.

4. Open **PC*MILER** then open the **Import Custom Place Wizard** by selecting *Import Custom Places* from the Tools menu. In the dialog that opens, navigate to the location where you saved the .txt file created above. Select that file and click **Open**.
5. The Import Custom Place Wizard will open. Next, you need to create an import file format specific to this import. In the Wizard that opens, make these selections:

- Leave **Column Order** as “<none>”
- For now, skip the check box next to “**First row contains column headings**”
- In the Delimiter area, select **Tab** to match the file format you selected above.
- In the bottom table area of the window you will see the records in your data file listed. As records are processed, each column heading will tell PC*MILER what type of data is in the column. Initially, all columns will be labeled as Skip, meaning that PC*MILER cannot interpret what type of data is in each column.

Click on each column heading and choose an appropriate category from the pop-up menu. Follow these labeling instructions:

FIRST ROW	COLUMN LABEL
CATScaleNumber	Skip
State	Skip
InterstateCity	Skip
TruckstopName	Name
InterstateAddress	Skip
InterstatePostalCode	Skip
PhoneNumber	Skip

FIRST ROW	COLUMN LABEL
FaxNumber	Skip
ManagerName	Skip
Latitude	Skip
<BLANK>	Skip
Longitude	Skip
LatLong	LatLong
URL	Skip

- Go back to the check box next to “**First row contains column headings**” and check it. This will remove the column headings in the bottom table area.
 - Click **OK** and a results window will start importing in the requested locations. Once the data matching process is complete, the **Results** window is activated. This dialog allows you to view the results, add the geocoded records to the PC*MILER list of Custom Places, and set guidelines for adding these records.
6. Next, you need to add these locations to the Custom Place Manager. Towards the bottom of the Results window, you’ll see two check boxes. **Mark the check box next to “Custom Place Manager”**, then select **Add** to add these records as new custom places in the database. Click **OK** to exit the Results window. If a message opens asking, “If you click Yes, it will close this window and you will no longer be able to edit this import file. Continue?” click **Yes**.

7. To ensure that these new records were added to the Custom Place Manager, select *Manage Custom Places* from the Tools menu. All entries are listed in alphabetical order. For assistance using the Custom Place Manager, consult the *PC*MILER User's Guide*.

For assistance, please contact:



ALK Technologies, Inc.

PC*MILER Technical
Support Team
P. 800-377-6453 x552
9:00am-5:00pm Mon-Fri (EST)



CAT Scale Company

24-Hour Help Desk
1-877-CAT-SCALE
(877-228-7225)